



Community Sharing Cottage Grove (left), CALC food pantry

# TOGETHER WE ACCOMPLISH MORE

When you support FFLC, you support a countywide network of dedicated providers working for the most vulnerable in our community. FFLC partners with more than 150 programs to provide help and hope to people in need. Most of the 8 million pounds of food we distribute annually is distributed by emergency food pantries. Many of these are almost entirely run by volunteers.

## EMERGENCY FOOD PANTRIES

Bethel Food Pantry, Eugene  
Casa de Luz Pantry, Eugene  
Catholic Community Services, Eugene  
Catholic Community Services, Springfield  
Catholic Community Services, Thurston  
Coburg Food Pantry, Coburg  
Community Aligned Resources for Eugene/Springfield, Springfield  
Community Food for Creswell  
Community Sharing, Cottage Grove  
Crossfire Hands of Hope, Springfield  
Daily Bread, Eugene  
Dexter Food Pantry  
Eugene Faith Center  
Florence Food Share  
God's Food Box, Alvadore  
God's Storehouse, Harrisburg  
Goldson Food Pantry, Cheshire  
Helping Hand, Marcola  
Hilltop Pantry, Crow  
Junction City Local Aid  
Larry Collins Memorial Pantry, Eugene  
Lowell Food Pantry  
Lower McKenzie Community Resources, Leaburg  
Mapleton Food Share  
McKenzie River Food Pantry, Vida  
Mid Lane Love Project, Veneta  
Noti Pantry

Oakridge Food Pantry  
PRAY BiG! Food Pantry, Eugene  
Salvation Army, Eugene  
St Vincent de Paul Food Room, Eugene  
The Shepherd's Table at St John's, Springfield  
Triangle Food Box, Blachly  
Up River Pantry, Culp Creek

## EMERGENCY MEAL SITES

Blue McKenzie Lion's Club Foundation  
Crossfire Field of Dreams, Springfield  
Ebbert Memorial United Methodist Church Meals Ministry  
Eugene Catholic Worker  
First Christian Church Interfaith Sunday Breakfast  
Hearth & Table at Central Lutheran  
Helping Hands Coalition  
Hope Center  
Looking Glass New Roads  
Shepherd's Hand  
St John the Wonderworker Church  
St Mary's Kitchen  
FFLC Dining Room  
Fern Ridge Warming Center  
Valley United Methodist Church

## EMERGENCY SHELTERS

Community Supported Shelters  
G Street OASIS

Looking Glass Station 7  
St Vincent de Paul Dusk Till Dawn  
St Vincent de Paul  
Egan Warming Center  
St Vincent de Paul First Place Family Center  
St Vincent de Paul Service Station  
St Vincent de Paul Youth House  
Willamette Family Treatment Services  
Womenspace Safe House  
Cornerstone Community Housing Community Program  
Boys & Girls Clubs of Emerald Valley  
The Father's House Generation Now  
Bethel School District  
Centro Latino Americano  
ECM Student Pantry  
Economic Justice League Food Pantry  
Gleaners Fern Ridge Connection  
Hamlin Middle School Pantry  
HIV Alliance  
Housing Our Veterans  
Kalapuya High School  
Laurel Hill Center  
Lane Community College  
Rainy Day Pantry  
Looking Glass Center Point School  
Looking Glass Riverfront Culinary  
Looking Glass Riverfront Job Training  
National Alliance on Mental Illness  
Opportunity Village  
Oregon Family Support Network  
Pearl Buck Center  
South Valley Resource Alliance  
Southtowne Rotary  
White Bird Medical Clinic  
Willamette High School  
Extra Helping Program (41 sites)  
Produce Plus Program (19 sites)  
Cereal for Youth Program (70 sites)

## NON-EMERGENCY FOOD PROGRAMS

Child's Way Charter School  
Columbia Care Clear Vue  
Looking Glass Pathways  
Network Charter School  
Network Charter School MECCA  
Network Charter School Yurt  
Oregon Supported Living Program  
PNW Adult & Teen Challenge  
Positive Community Kitchen  
Tempo Program  
Twin Rivers Charter School  
Occupy Medical  
Relief Nursery Springfield  
Girl Scouts Troop 20085 Oakridge  
Oakridge Family Resource Center  
The Child Center  
St Vincent de Paul Resident Services  
Womenspace Crisis & Support Center  
Youth ERA  
Relief Nursery Eugene



Empty Bowls Auction chairs Gary and Jane Powell

# 17TH ANNUAL EMPTY BOWLS AUCTION PROVIDES 700,000 MEALS

This year's Empty Bowls Auction was like no other. Unable to gather in person, we took our auction online. Thanks to the compassion and generosity of our chairs, participants and sponsors, we raised over \$230,000, providing nearly 700,000 meals for our neighbors experiencing hunger.



Thank you to volunteer co-chairs Gary and Jane Powell who went above and beyond to ensure the success of our first-ever virtual auction. "We support FFLC because food is among the most basic of human needs," said Gary. "Frankly, I am ashamed that in the richest country in the world, we have people who go to bed hungry every night. FFLC provides food to children and seniors, to single people and families, in cities and rural areas and more recently to those displaced by fires. I can't imagine a better place for us to invest our time, talent and financial support."

Thank you to our title sponsor, Hawes Group. "FFLC is a great community resource that supports families and individuals experiencing food insecurity while promoting wellness and uniting local businesses for a great cause," said Joe Hawes, Hawes Group CEO.

Thank you also to these generous sponsors — King Estate, Murphy Company, Fred Meyer Jewelers, American Medical Concepts, KPD Insurance/Copper Point Insurance Companies, Café Yumm!, Kaiser Permanente, Moss Adams, Hayden Homes, Timber Products Company and Roseburg Forest Products.

Thank you to these in-kind sponsors — Parties To Go, QSL Print Communications, Voorhees & Associates and Zion Ideas.

Finally, thank you to emcee Robb Holloway and to auctioneer Sid Voorhees for working together to bring such great energy to our first-ever online event.

# FFLC PARTNERS WITH THE ARC TO PROVIDE FOOD

FFLC has long partnered with The Arc of Lane County to provide job training for clients of The Arc with disabilities. Now FFLC is working with The Arc to provide food to people in need.

This fall, The Arc and Families Connected opened Community Aligned Resources for Eugene/Springfield (CARES) at 4181 E. Street in Springfield. CARES provides food, toiletries and home goods to people who experience a disability, families who have a child with a disability and other people in need in our local communities. FFLC is excited to partner with The Arc to provide food to more people in need.

Community Alliance of Lane County (CALC) is supporting the new food and resource center with volunteers. Rico Perez is CALC board chair and knows how important it is to provide help right now. "When you have the kind of lock down the way we had, food insecurity jumps in real quick. Food gives a little relief to that pressure," said Rico.

## FOLLOW US



# FOOD *for* THOUGHT

NEWSLETTER FALL 2020

Donate online at [foodforlanecounty.org/donate](https://www.foodforlanecounty.org/donate)



John Carlile

## FOOD FOR LANE COUNTY

770 Bailey Hill Road  
Eugene, OR 97402  
(541) 343-2822

## MISSION

*To reduce hunger by engaging our community to create access to food*

We accomplish our mission by soliciting, collecting, rescuing, growing, preparing and packaging food for distribution through a countywide network of social service agencies and programs, and through public awareness, education and community advocacy.

## VISION

*To end hunger in Lane County*

# FFLC HELPS VICTIMS OF HOLIDAY FARM FIRE

Working out of a relief center in Blue River, John Carlile and some dedicated volunteers are distributing food and other essentials to people affected by the Holiday Farm Fire. "Folks were literally running for their lives from flames with nothing but the clothes on their backs," said John. When residents began returning to the area, John turned to FFLC for help. "Tom [Mulhern, FFLC Executive Director] said 'what do you need, and I will get it on a truck and get it to you'."

"We're essentially running a free-to-the-community grocery store, and we're going to continue to do that as long as we have the supplies and the need exists," said John. Thanks to your donations, FFLC is now providing food to three relief centers in the McKenzie River Valley — Leaburg, Blue River and Rainbow.

"I came down to see how I could help, and they already had an incredible operation going with no instruction and no operating manual. Nothing to go on but a desire to help the people who needed help and a will to do it," said John. The economic impact of the fire will be long lasting. "We're going to have people in need of food for a long time," he added. "FFLC really stepped up, and we're all confident that they're going to continue to make sure these folks have the food and resources they need to rebuild their lives."

FFLC also worked with the American Red Cross to provide food to fire evacuees in Eugene and Springfield. Mark Stewart is Feeding Supervisor for the Red Cross. "We were feeding up to 900 evacuees three meals a day from my distribution center," said Mark. "FFLC was instrumental in keeping up with the demand. They also took the lead in preparing special needs meals. That part alone would have been extremely challenging without their help. From our time working together, I can tell Lane County is in great hands. Thanks to Tom and the whole team."

## RESPONDING TO AN EMERGENCY

Your support allows FFLC to play a critical role in Lane County's Emergency Response Plan while continuing to provide food through our countywide food distribution network.



Editor: Denise Wendt  
Design: Amy Renée Design





Cottage Grove Mobile Pantry

CONSIDER THESE TAX-SAVING CHARITABLE YEAR-END GIVING OPTIONS

The end of the year is the perfect time to make the most of your charitable giving. With the passing of the CARES Act, additional charitable deduction provisions were added for 2020. Talk to your tax advisor, and consider the following ways you can help fight hunger in Lane County and realize year-end tax savings.

DONATE ONLINE

Make your gift securely online at [foodforlanecounty.org/donate](https://foodforlanecounty.org/donate), or mail a check payable to FFLC at 770 Bailey Hill Road, Eugene, OR 97402. Online gifts must be received before midnight local time on

December 31. Checks mailed should be postmarked by or before December 31.

GIVE A GIFT OF STOCK

A gift of appreciated stock may exceed the benefits of a cash gift. For information on how to give stock to FFLC, visit [foodforlanecounty.org/donate/donate-stock](https://foodforlanecounty.org/donate/donate-stock).

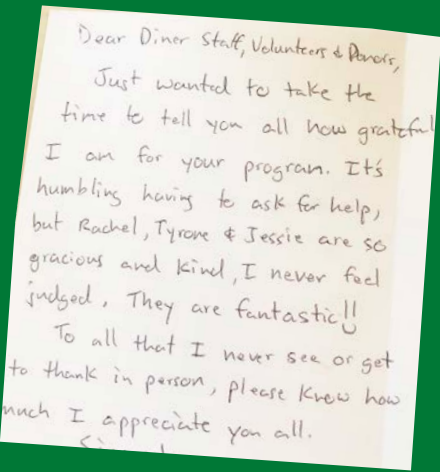
*This is general information and not intended as investment advice. Please consult with a tax professional regarding your individual situation.*

"PLEASE KNOW HOW MUCH I APPRECIATE YOU"

The Dining Room in downtown Eugene is just one FFLC program that has changed the way it operates in order to safely serve people during this pandemic.

"It's humbling having to ask for help, but Rachel, Tyrone and Jessie are so kind. I never feel judged," wrote one diner in a thank you note.

"This is just one of the many thanks our team receives every month from our Dining Room guests," said Josie McCarthy, Dining Room Program Manager. "With all the challenges our diners face every day, they continue to be grateful for our service."



SCAN A COUPON

Thank you for donating to SCAN a Coupon. SCAN is an easy way to give where you live. SCAN today at one of these participating stores.

Market of Choice • Down to Earth • The Kiva  
Friendly Street Market • Capella Market  
Sundance Natural Foods

OUR PARTNERS



Printed through a generous contribution by:



NO LETTER CARRIERS DRIVE THIS YEAR

Unfortunately, 2020 has taken another tradition with it. Our Letter Carriers Thanksgiving Drive has been canceled this year because of COVID-19 precautions. This has been a long-time food drive partnership that we hope to see back in action this spring for the National Association of Letter Carriers Food Drive. Be sure to thank your letter carriers for their hard work during this holiday season, and watch our website and Facebook page for information about upcoming drives.

THANK YOU, KVAL

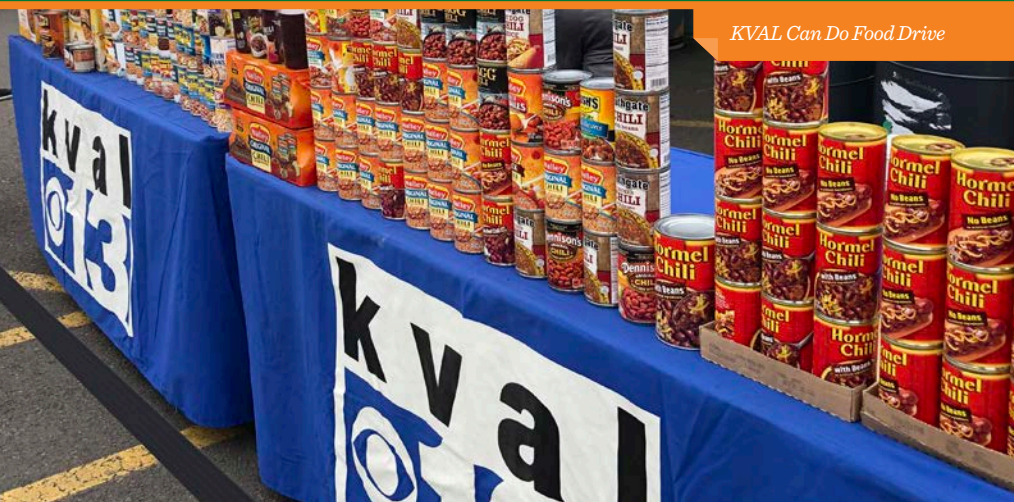
Thank you to long-time supporter, KVAL-TV. In addition to sponsoring fundraising events such as Chefs' Night Out and involving its employees in volunteer opportunities, KVAL hosts two food drives every year to benefit FFLC — "KVAL Can Do" in the spring and "Take a Bite Out of Hunger" during the winter holiday season.

When stay-at-home orders were issued in March, KVAL quickly transformed its spring "KVAL Can Do Food Drive" into a telethon that raised more than \$73,000 for FFLC! In August, KVAL raised another \$14,330.

"As one of its core values, KVAL-TV has a long and proud history of community partnerships and support for our local nonprofits," said KVAL Vice President and General Manager Dan Corken. "FFLC has been one of our oldest and most satisfying partnerships for decades. We commend their tireless efforts to feed our neighbors."

"KVAL is blessed with the platform to not only help raise funds but also awareness," added Dan. "We continue to be so inspired by the response that we receive from our viewers during every one of our food drives and telethons. KVAL and our people are committed to continuing this service to the community. We thank you for your commitment."

FFLC is so grateful for KVAL, especially during these difficult times. Watch KVAL and FFLC's website and Facebook page for information about "Take a Bite Out of Hunger" this holiday season.



GIVE TODAY



**DONATE ONLINE**  
[foodforlanecounty.org/donate](https://foodforlanecounty.org/donate)



**MAIL GIFTS**  
770 Bailey Hill Road  
Eugene, Oregon 97402



**CALL**  
(541) 343-2822

YOUR GIFT MATTERS

We are grateful for the many gifts we have received since March. Thank you for your financial gifts, food donations, offers to volunteer, companies and individuals pledging matching funds to offset losses from canceled events and food drives and so much more. Community members like you continue to step up to make sure that people in Lane County have access to food during this very difficult time.

DONATE TODAY

The best way to help right now is to make a financial donation to FFLC. Donate online at [foodforlanecounty.org/donate](https://foodforlanecounty.org/donate), call (541) 343-2822 or use the enclosed envelope to donate by check or credit card. Your gift will be used immediately to provide help to those who need it.

BECOME A MONTHLY DONOR

Regular monthly donations help donors balance their annual giving throughout the year. Monthly donations provide FFLC with a steady source of financial support. Sign up online, or call (541) 343-2822.

SCAN A COUPON

Our SCAN a Coupon program is an easy way to give where you live. SCAN a \$1, \$5 or \$10 coupon at one of these local SCAN partners — Market of Choice, Down to Earth, The Kiva, Friendly Street Market, Capella Market and Sundance Natural Foods.

LETTER TO READERS



It's been a tough year. Many people lost jobs, businesses and income because of COVID-19. Others lost homes and property to wildfires. And all of us have had our "normal" lives and routines turned upside down.

Through it all, FFLC and our network of community partners have been

here, figuring out ways to overcome obstacles and provide food safely to those who need it.

FFLC is at the heart of our community's response to those who have suffered the most from the unprecedented events of 2020.

The generosity and compassion that this community has shown toward those in need is both humbling and inspiring.

The tough times are not over, and the road to recovery stretches ahead. We are committed to meeting the need for food assistance in Lane County, and we can only do that with the continued engagement and involvement of people like you.

Thank you for being part of this important work!

*Tom Mulhern, Executive Director*

To watch videos about our response to COVID-19, go to <https://foodforlanecounty.org/covid-19-video-updates>.

30TH ANNUAL STUFF THE BUS FOOD DRIVE IS NOVEMBER 13 AND 14

Mark your calendars now for the 30th Annual Stuff the Bus Food Drive on November 13 and 14 at Walmart stores in Eugene and Springfield. Sponsored by 104.7 KDUK, US 101 and LTD, the drive supports FFLC and Toys for Tots. Watch our website and Facebook page for times and more information. Come by your area Walmart store and help stuff the bus!

TURKEY TROT IS NOVEMBER 26

The Turkey Trot is back, this year at Alton Baker Park. We'll kick things off at 8am on Thursday, November 26. This annual event, put on by Level 32 Racing and Univera, benefits FFLC. This year's socially distant 5k race will look a little different but

still promises the fun of a Turkey Day family event. Go to [http://level32racing.com/Turkey\\_Trot\\_Eugene.html](http://level32racing.com/Turkey_Trot_Eugene.html) to register and for more information.

THANK YOU TO THESE RECENT DRIVES

Ameriprise Financial, Altair Ski & Sports Club, Anytime Fitness, Carol Thatcher, Emmaus Lutheran Church, Farmers Brothers Coffee, First Christian Church, Franz Family Bakery, Greenhill Humane Society, KKNV, KVAL-TV, Mary Lee Donley, Natural Dentures, Natural Grocers, Nesterowicz Family, Parkside Apartments, Phresh Start, Eugene/Springfield REALTORS®, Smart Foods, Temple Beth Israel and Valley River Center.

