



Creswell Food Pantry

## EMERGENCY FUNDING FOR FOOD PURCHASES BRIDGES THE GAP

Governor Kate Brown announced in April that Oregon will provide \$8 million to the Oregon Food Bank Statewide Network, of which FFLC is a member, filling an urgent need for Oregon families seeking food assistance during the COVID-19 public health crisis. The state expects to receive a 75% reimbursement from FEMA.

The economic fallout from COVID-19 will last well beyond the necessary social distancing and stay-at-home policies that are currently in place. Many economists are forecasting effects that could last 12 months or longer, even with the recent stimulus.

"As we've seen in Louisiana, Haiti and elsewhere, the hunger, poverty and inequality that existed in our communities two months ago is now deepening and widening as a result of the pandemic." — Oregon Food Bank

"As FFLC has had to suspend grocery store pick-ups and cancel food drives, this funding from the state will go a long way to

providing assistance for people struggling to put food on the table," said Kara Smith, FFLC Food Resource Developer. "Receiving emergency funding from the state of Oregon and FEMA will dramatically help in getting the needed food items that we would typically get through food drives, Fresh Alliance and Food Rescue Express."

"In times of crisis, no Oregonian should need to wonder where they can find food for their family," said Governor Brown. "I know many Oregonians, through no fault of their own, have lost their jobs and incomes due to the COVID-19 outbreak. The Oregon Food Bank Network is a vital resource for families in need."

"We're seeing a dramatic increase in the demand for food," said Kara. "At the same time we're experiencing a significant decrease in food donations from commercial sources. This stimulus from the State of Oregon could not come at a better time."

## MORE PEOPLE IN OREGON ARE ELIGIBLE FOR FOOD ASSISTANCE

Many people in our community are struggling through this difficult time. Across the state, food pantries are experiencing a dramatic increase in demand for food — between 20% and 60% depending on the area.

Here in Lane County, our pantries are also serving more people, many for the first time.

Now more Oregon families are eligible for food assistance.

The income guidelines for obtaining food assistance in Oregon have changed from 185% of the Federal Poverty Level to 300% of the Federal Poverty Level. This change allows greater flexibility to assist Oregon households that didn't previously qualify.



Volunteer packs fresh veggies for distribution at mobile food pantries

## FFLC LAUNCHES MOBILE PANTRIES TO MEET INCREASED DEMAND FOR FOOD

Eugene/Springfield NAACP President Eric Richardson contacted FFLC in March to offer his help. By the following week, FFLC's first mobile pantry was up and running at NAACP headquarters, housed in the Historic Mims house in Eugene.

During the first two nights of operation, NAACP and FFLC staff and volunteers served 173 households — 47 had never been to a food pantry before. Several people told us they had just lost their jobs to closures related to COVID-19.

With financial support from donors like you, we are now operating weekly mobile pantries in Eugene, Springfield, Cottage Grove and Oakridge. We are serving between 80 and 150 households a night at each location — and every night we see people who are seeking help for the first time.

We met Matthew in March at the mobile pantry in Eugene.

"I called FFLC. They were so helpful to tell me about this place to get food today," said Matthew. "I haven't worked since June of last year due to a motorcycle wreck I was in. I've only just in the last month or so been physically able to get a job. This is going to help me get through this so I can help other people."

"We're just trying to serve low-income families during this difficult time," said Eric. "Partnering with FFLC is an obvious thing to do and a way we can interact with people for good."

Thank you for your financial support and to Willamalane in Springfield, Bohemia Elementary School in Cottage Grove and Oakridge High School.



Mobile Pantry at NAACP

## THANK YOU KVAL, UO AND TRILLIUM



*KVAL Can Do Telethon raises more than \$73,000!*



*UO Football Spring Scrimmage raises more than \$21,000!*



*Trillium Fill the Truck Drive raises more than \$14,000!*

## FOLLOW US



# FOOD *for* THOUGHT

■ NEWSLETTER ■ SPRING 2020

Donate online at [foodforlanecounty.org/COVID19Fund](https://www.foodforlanecounty.org/COVID19Fund)



## FOOD FOR LANE COUNTY

770 Bailey Hill Road  
Eugene, OR 97402  
(541) 343-2822

## MISSION

*To reduce hunger by engaging our community to create access to food*

We accomplish our mission by soliciting, collecting, rescuing, growing, preparing and packaging food for distribution through a countywide network of social service agencies and programs, and through public awareness, education and community advocacy.

## VISION

*To end hunger in Lane County*

## AT OUR BEST WHEN WE SERVE OTHERS

Excerpted from *The Best Care Possible: A Physician's Quest* by Ira Byock

"Years ago, anthropologist Margaret Mead was asked by a student what she considered to be the first sign of civilization in a culture. The student expected Mead to talk about fishhooks or clay pots or grinding stones. Mead said that the first sign of civilization in an ancient culture was a femur that had been broken and then healed."

"[She] explained that in the animal kingdom if you break your leg you die. A broken femur that has healed is evidence that someone has taken time to stay with the one who fell, has bound up the wound, has carried the person to safety and has tended the person through recovery. Helping someone else through difficulty is where civilization starts, Mead said."

Mead's example is a reflection of what we are going through right now. We are helping each other through this difficult time. We will survive by being compassionate and kind toward one another. At FFLC, we see examples of your compassion and kindness and generosity and gratitude every day — and we are grateful to be a witness to that.

In April, we partnered with KVAL for the KVAL Can Do Telethon. Like an old school telethon, we took many of your donations over the phone. It was a joy to hear your voices. So many of you had kind words to say. "We can't help much but we're doing what we can." "I hope this helps a little." "Thank you for all you do."

To all of you and for everything you do we say thank you. Know that you are making a difference and that we couldn't do what we do without you.

## YOU'RE SO GENEROUS!

"I just appreciate what you're sharing. It's only my adult son and I, so I'm also cooking some meals for two of my senior neighbors so they don't have to go out. The food is helping a lot." — Sherene, Creswell



Editor: Denise Wendt  
Design: Amy Renée Design





Meals on Wheels

## COVID-19: FFLC ADAPTS AND RESPONDS DURING CRISIS

The COVID-19 crisis has affected FFLC’s food supply channels, disrupted our food distribution network and inspired special emergency food distribution efforts. Here are a few highlights from our Emergency Response Status Report, which describes how we and our partners are providing food to those in need in this challenging environment.

### HOW IS FFLC’S FOOD SUPPLY?

FFLC has suspended food pick-ups from grocery stores, the University of Oregon and PeaceHealth Hospitals because the process of collecting, sorting, processing and distributing these food items that are frequently handled has an unacceptable level of risk.

Many food drives have been canceled or postponed, including the UO Football Program Spring Scrimmage in April and the Letter Carriers’ Food Drive in May. These two drives together typically bring in over 150,000 pounds of food.

We have a good supply of food in our warehouse, and Oregon Food Bank has more food to send our way, but the loss of food from grocery stores, cafeterias and food drives represents a loss of highly valued variety. We hope to address this loss of variety with emergency funding for food purchases.

### HOW IS FFLC DISTRIBUTING FOOD TO THE COMMUNITY?

We are focusing our efforts on maintaining the flow of food to emergency pantries, meal sites and shelters because these programs reach the largest number of people in the safest manner.

FFLC operates the Meals on Wheels program in Eugene. Volunteers are delivering meals to homebound seniors at particularly high risk during the pandemic. We have implemented a “no touch” delivery system that involves setting the meal by the door and watching from a distance while the client or someone in the household retrieves the meal. When possible, we have also started delivering batches of frozen meals once a week to many seniors to reduce the frequency of contact.

### EMERGENCY INITIATIVES

We are operating four mobile pantries one night a week each in Eugene, Springfield, Cottage Grove and Oakridge. In addition, Lane County has contracted with FFLC to provide food at three temporary COVID-19 response shelters — two in Eugene and one in Springfield — for people who are unhoused.

*For more on our COVID-19 Emergency Response, go to [foodforlanecounty.org/CovidEmergencyResponse](https://foodforlanecounty.org/CovidEmergencyResponse).*

## THANK YOU FOR HELPING FILL THE GAP

This public health crisis has disrupted our food supply in many ways. Many food and fund drives have been postponed or canceled. In addition, FFLC has suspended food pick-ups from local grocery stores, cafeterias and Peacehealth hospitals. These sources provide variety and nutrition to our food supply. Food drives generate thousands of shelf-stable pounds of food year-round.

Since March, many people have generously donated funds to help fill the gap. Thank you to these new and ongoing donors — and to all those not listed here — for stepping up when so many have had to step back. Thank you for helping fill the gap during this challenging time.

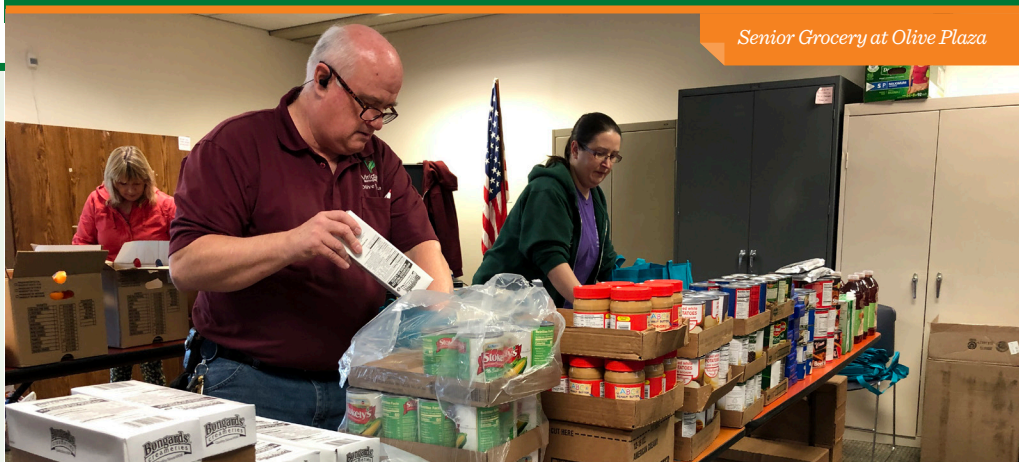
*Eugene Emeralds • Kendall Cares • KVAL Can Do Telethon • Talecris Plasma Resources • Trillium Community Health Plan Fill the Truck Drive • Umqua Dairy • University of Oregon • University of Oregon Athletics • University of Oregon Football Spring Scrimmage • Veterans of Foreign Wars Coburg • Will Leather Goods • YMCA*

## THANK YOU

Thank you also to these donors who provided food and funds in January, February and March.

*Aesthetic Surgical Arts • American Legion Post 83 • Barre3 • Bigfoot Beverages • Bijou Arts Cinema • Boardman Foods • Brenner’s Furniture • Cal Young Middle School • Central Presbyterian Church • Charlemagne French Immersion School • Church of Jesus Christ of Latter Day Saints • Columbia Gorge • Dari-Mart • Dutch Bros • Eclectic Edge Racing • Eugene Disc Golf Club • Eugene Yoga • First Tech Federal Credit Union • Governor’s State Employees Food Drive • Great Harvest Bread • Home Depot • Kelly Middle School • Lane Fire Authority • League of Women Voters • Level 32 Racing • Love Your Neighbor Food Drive • McKenzie Commercial • Mod Pizza • Mountain Rose Herbs • New Hope Church • Ninkasi Brewing Company • Oak Hill School • Oregon Department of Human Services District 5 • Oregon Employment Department • Oregon State Hospital • Organically Grown Company • Overtime Grill • Prairie Mountain School • River Road/El Camino del Rio Elementary School • Saturday Market Holiday Market • SELCO Community Credit Union • Springfield High School • Univera Serve First*

Senior Grocery at Olive Plaza



## WAYS TO DONATE



**DONATE ONLINE**  
[foodforlanecounty.org/COVID19Fund](https://foodforlanecounty.org/COVID19Fund)



**MAIL GIFTS**  
770 Bailey Hill Road  
Eugene, Oregon 97402



**CALL**  
(541) 343-2822

## YOUR FINANCIAL SUPPORT MATTERS — NOW MORE THAN EVER

We are grateful for the many gifts we have received since March. Financial gifts, food donations, offers to volunteer, companies and individuals pledging matching funds to offset losses from canceled events and food drives and so much more.

We have received countless messages from community members like you saying, “whatever you need.” Our community is stepping up to make sure that people have access to food while we go through this pandemic. Thank you.

### DONATE TODAY

The best way to help right now is to make a financial donation to FFLC. Donate online at [foodforlanecounty.org/COVID19Fund](https://foodforlanecounty.org/COVID19Fund), call (541) 343-2822 or mail a check to FFLC, 770 Bailey Hill Road, Eugene, OR 97402. Your gift will be used immediately to provide help to those who need it.

### BECOME A MONTHLY DONOR

Regular monthly donations help donors balance their annual giving throughout the year and provide FFLC with a steady source of financial support. Sign up online or call (541) 343-2822.

### SCAN A COUPON

Scan a \$1, \$5 or \$10 coupon at one of our SCAN partners listed in this newsletter.

## LETTER TO READERS



You and I are coping with COVID-19 as best we can. Imagine what it’s like for those who are dealing with all this while struggling to put food on the table.

Safely getting food to those who need it is a complex challenge in these circumstances. As the pandemic

continues, FFLC is needed now more than ever.

Our network partners around the county are working hard to keep up with the demand for food assistance. Many people are turning to them and us for the first time.

I am inspired every single day of this crisis by the creative,

compassionate and resolute response of our staff, volunteers and community partners and by the tremendous generosity of our community.

At this time, the best way you can help is by making a financial contribution to FFLC. Your donation will help your neighbors keep their families fed during the COVID-19 crisis.

We will get through this challenging time together.

*Tom Mulhern, Executive Director*

**To learn about the barriers we're facing and the nature of our response, go to [foodforlanecounty.org/CovidEmergencyResponse](https://foodforlanecounty.org/CovidEmergencyResponse).**

**GIVE HELP. Go to [foodforlanecounty.org/COVID19Fund](https://foodforlanecounty.org/COVID19Fund) or call (541) 343-2822 today.**

## WE ARE IN THIS TOGETHER

Your financial support makes our response to this public health crisis possible. We are operating mobile pantries in four communities. We are safely getting groceries to vulnerable seniors through our Senior Grocery Program and Meals on Wheels. We are

serving to-go meals at the Dining Room and partnering with Lane County to provide more meals to the unhoused in our community. And we are working with the Oregon Food Bank Statewide Network to purchase food. Thank you for your continued support.



**EMILY** came from a job interview to FFLC’s mobile pantry in Eugene to get food for herself, her husband and their four young children. “My husband works, but his hours are limited. Everything is up in the air right now.”



**GLEN** is looking for work, and his wife is a furloughed school teacher. The groceries he got at FFLC’s mobile pantry in Springfield helped fill the gap. “Money is tight, so this really helps.”



**BLAINE** was laid off in March when the restaurant where he was working closed. “It’s been tough, but FFLC was helpful to me before when I was between jobs. It got me through the hard times. I’m glad you’re here today.”



**TERREA** is a mom, grateful for the extra help. We talked to her at the Creswell Food Pantry. “I have kids, and we’re running into some tough times. I’d rather be safe than sorry. This is a tremendous help.”



## SCAN A COUPON

Thank you for donating to SCAN a Coupon. SCAN is an easy way to give where you live. SCAN today at one of these participating stores.

*Market of Choice • Down to Earth • The Kiva Friendly Street Market • Capella Market Sundance Natural Foods*

### OUR PARTNERS



*Printed through a generous contribution by:*

